

GEM024SJ

Application

Model GEM024SJ three phase four wire electronic DIN rail active energy meter is a kind of new style three phase four wire electronic active energy meter, it adopt micro-electronics technique, and imported large scale integrate circuit, use advanced technique of digital and SMT techniques, etc. It has its completely independent intellectual property rights and minimum size, and also a new three phase four wire active energy meter. The meter completely accord with relevant technical requirements of class 1 three phase active energy meter stipulated in international standard IEC 62053-21. It can accurately and directly measure 50Hz or 60Hz active energy consumption from three phase four wire AC electricity net. This meter has white backlight source eight digits LCD monitors shows the active energy power consumption. It has following features: Good reliability, small volume, light weight, specious nice appearance, convenient installation, etc.

Functions and features

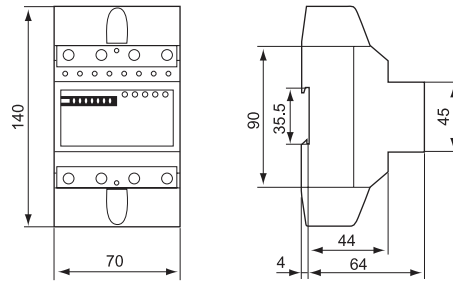
- 35mm standard DIN- rail installation, complying with standard DIN EN50022;
- Four pole width (Modulus 17.5mm), complying with standard DIN43880;
- Standard configuration 7+1 digits display (9999999.1kWh) by white backlight source LCD. May select 7+1 digits display (999999.1kWh) without backlight source normal LCD. (Product Configuration code is SK);
- Standard configuration pulse output passive (polarity), May select distant impulse output passive (no polarity). And contact with all kind of AMR system conveniently, complying with standard IEC 62053-31 and DIN 43864;
- Four LED respectively instructions every power state and signal of power impulse;
- Automatic detect the direction of the trend of load current. And Instructions on individual LED;
- Single direction three components measure three phase four wire active power consumption. It is nothing with direction of the trend of load current. Complying with standard IEC 62053-21;
- Directly connect to use, type S connection (inlet from top, outlet from bottom);
- Extended terminals cover, in order to protect to use electricity safely.

Technical parameters

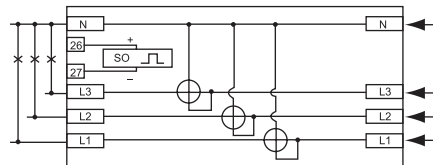
Model	Accuracy	Reference voltage (V)	Current specifications (A)	Starting current	Insulation performance
GEM024SJ	Class 1	3 x 230/400	5(100)	0.02	AC voltage 4kV for 1 minute, 1.2/50us waveform impulse voltage 6kV

GEM024SJ

Outer and mount dimension



Wiring diagram (Type S)



Terminal	Note
L1	L1 phase line
L2	L2 phase line
L3	L3 phase line
N	Neutral line(Inlet from top, outlet from bottom)
26 and 27	Port of pulse output passive